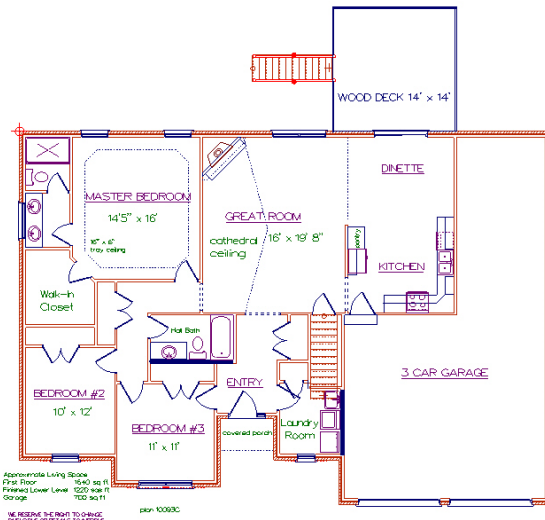


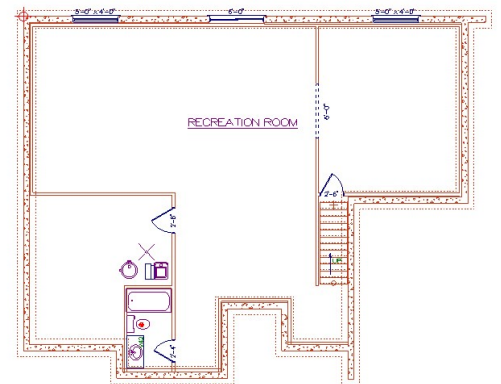
**1902 Pleasant Hill Dr.
 Pleasant Hill**



This floor plan can be customized to suit your needs.

The lower level will vary by site considerations.

- Brand New Three Bedroom Ranch Home
- Spacious Family Room open with Kitchen and Eating Area
- Cathedral Ceiling In The Family Room
- Full Basement With A Walk-Out Door And Large Windows For Natural Light
- Covered Front Porch
- First Floor Laundry Room
- Oversized Three Car Garage
- Approximate Total Living Space - 1640 sq. ft.
- Approximate Lower Level Living Space—1200 sq. ft.



Spille Builders and Developers is proud to be a member of
 the National Association of Home Builders since 1965!

plan 10093C



Spille Builders and Developers Inc.
859-341-8268
tomspille@spillebuilders.com



Price and details subject to change.

Not part of a contract

Total Finished of 2840 sq. ft.