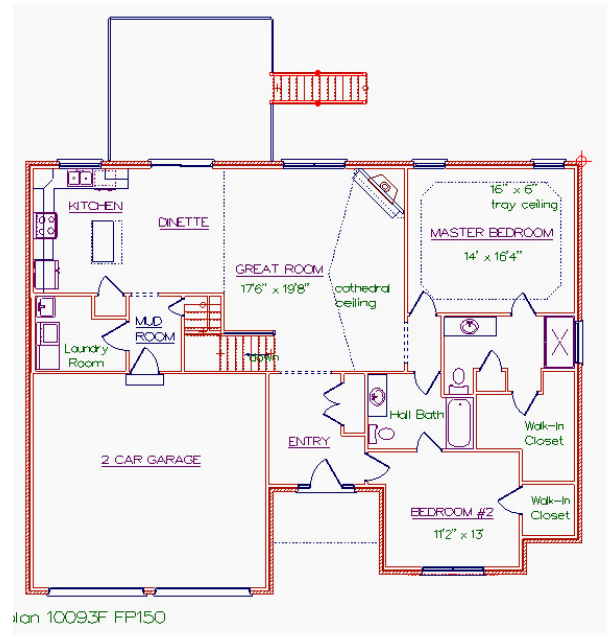




1948 Freedom Trail Dr. Freedom Park

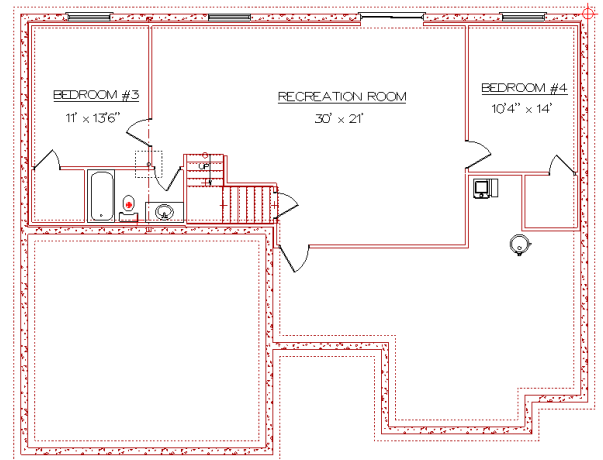


This floor plan can be customized to suit your needs.

The lower level will vary by site considerations.

- Spacious Family Room
- Cathedral Ceiling In The Family Room, Kitchen and Dinette
- Wood Deck With Stairs To The Rear Yard
- Covered Front Porch with Wood Ceiling
- Main Level Laundry Room
- Finished Lower Level With A Walk-Out Door And Large Windows
- Approximate Main Level Living Space - 1595 sq. ft.
- Approximate Lower Level Living Space—1025 sq. ft.

Total Finished of 2620 sq. ft.



plan 10093F FP150



Spille Builders and Developers is proud to be a member of the National Association of Home Builders since

Spille Builders and Developers Inc.
859-341-8268
E-mail: tomspille@spillebuilders.com



HOME BUILDERS ASSOCIATION
OF NORTHERN KENTUCKY