

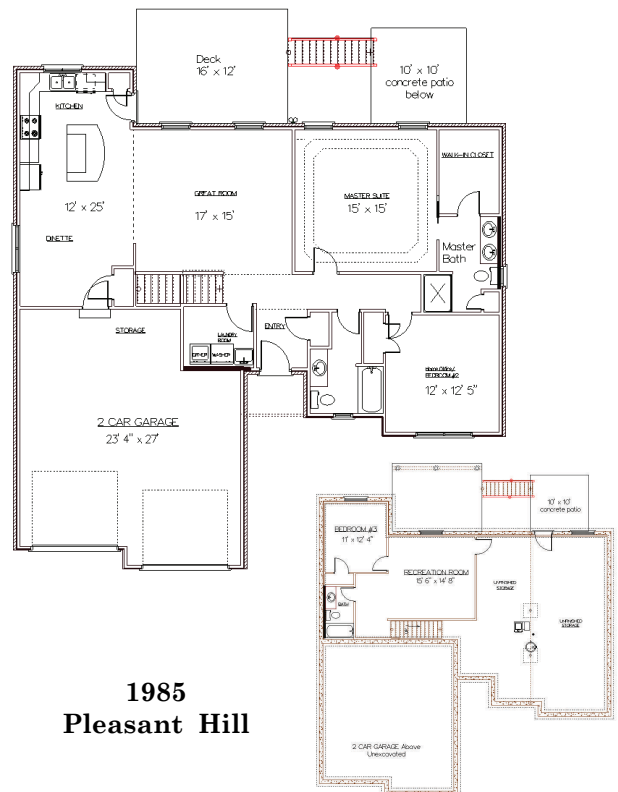
*Cavalade 2011*

# SPILLE BUILDERS



## Noah

- Open Floor Plan with Comfortable Walking Paths
- Nine (9) Foot Ceilings throughout the Main Level
- Inviting Outdoor Entertainment area
- Warm Combination of Brick and Stonework
- Low E Energy Saving Windows
  - Sharp Looking Prairie style grids
  - Rich Transom Accents
- Three Bedrooms with Three Full Bathrooms
- Oversized Two Car Garage with Extra Storage
- Master Suite features a Double Stepped Tray Ceiling
- Private Master Bathroom with Twin Bowls
- Convenient Main Level Laundry room with Utility Tub
- Designer Kitchen with large Arched Breakfast Island
- Ceiling Accents, Display Nook in Great Room
- Finished Lower Level with ample storage space
  - Bedroom, Full Bath, Recreational Space
  - Kitchen Sink Rough In for Future Use
- Energy Saving Home so you can afford to live comfortably.
- National Green Build Certificate by Outside 3rd Party
  - A More Responsible Way to Build
  - Durable Home Components
  - Lower Energy, Water and Sanitation Costs
- ENERGY STAR HOME®, HERS Index 59
- Latest in HVAC / Hybrid Heating and Cooling System
  - Lower Monthly Utility Bills
- Time Saving Low Maintenance Exterior
- Approximately 1975 sq. ft. of Finished Living Space
- 1450 sqft upper, 525 sqft lower level
- 



**1985  
Pleasant Hill**



**www.spillebuilders.com**  
**Tom Spille, Certified Green Professional**  
Contact email: **sales@spillebuilders.com**  
Tom Spille Cell : **859. 393 . 6323**  
Bernadette Spille Cell : **859. 486 . 3196**  
Details subject to change without notice, not part of any contract.